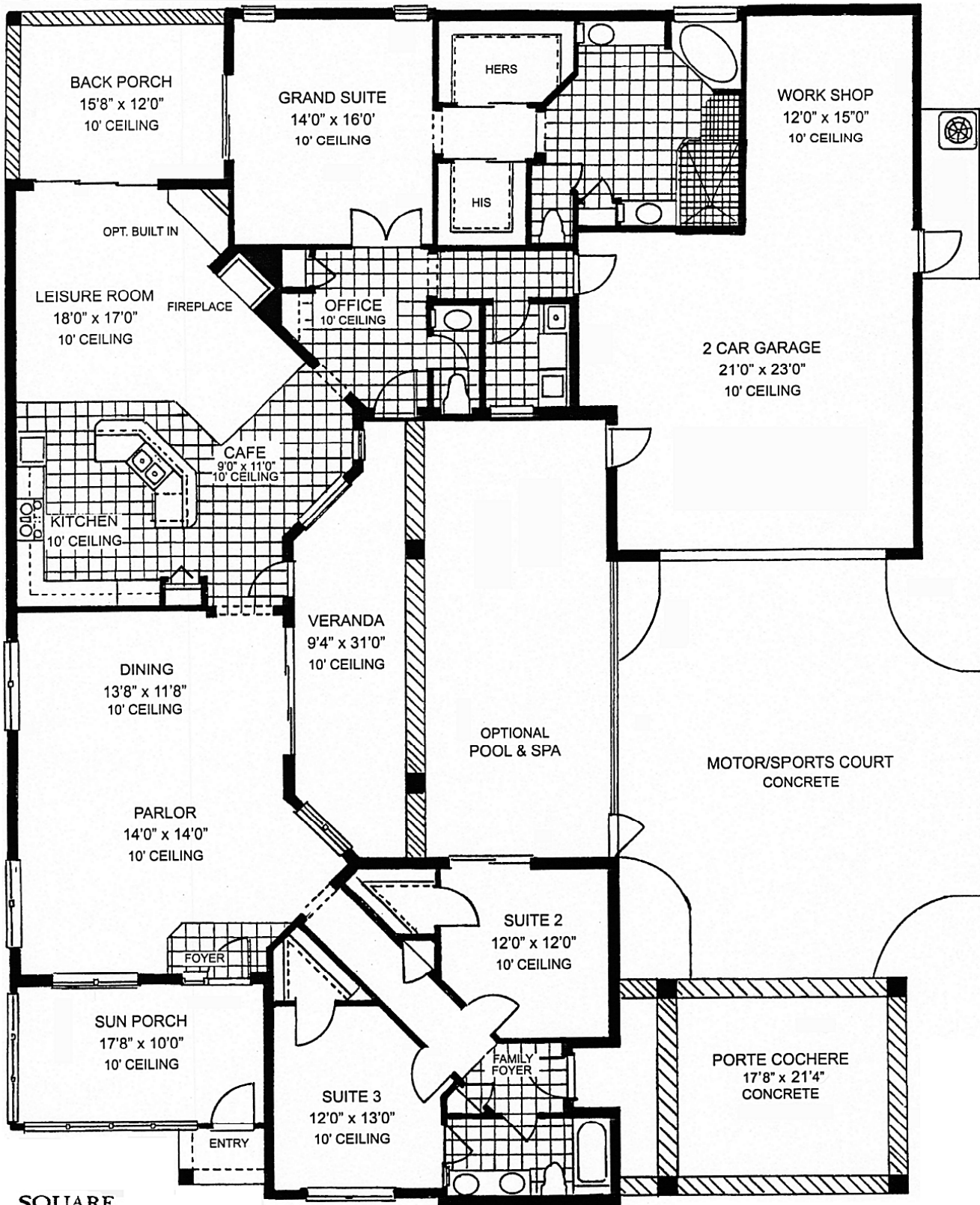


# The Sapphire / Style #7

3 BEDROOM / DEN / 2 1/2 BATH



## SQUARE FOOTAGE

|              |              |
|--------------|--------------|
| LIVING AREA  | 2,822        |
| GARAGE       | 754          |
| VERANDA      | 251          |
| FRONT PORCH  | 24           |
| BACK PORCH   | 188          |
| PORT COCHERE | 270          |
| <b>TOTAL</b> | <b>4,317</b> |



Denotes tile per specifications in contract

This is an architectural plan and may not precisely reflect the finished product. Due to fluctuating economics, product availability and prices often change, thus McGregor Oaks, Ltd. reserves the right to increase prices, and to substitute, eliminate, and/or modify building materials, architectural features, dimensions, options, appliances, and fixtures of a like kind and quality without prior notice. Model homes and brochures are representational. All dimensions are approximate. Some items shown in models are for display purposes only and may not be included in the price. Oral representations cannot be relied upon as correctly stating representations of McGregor Oaks Ltd. Please refer to contract documents.  
McGregor Oaks Ltd. Copy Right plans 2004